

## **Enerkey Module 2**

# **Long-term Energy Planning within the EnerKey Project**

EnerKey Long-term Prospective Group  
Kick-off meeting 18 September 2008

**Timon Wehnert, Michael Knoll**

Institut für Zukunftsstudien und Technologiebewertung, Berlin  
Institute for Futures Studies and Technology Assessment, Berlin

## Institute for Futures Studies and Technology Assessment



### Contacts for EnerKey:



Timon Wehnert

☎ +49-30-803088 13  
in SA: 072 981 9666

t.wehnert@izt.de



Michael Knoll

☎ +49-30-803088 18  
in SA: 072 981 9666

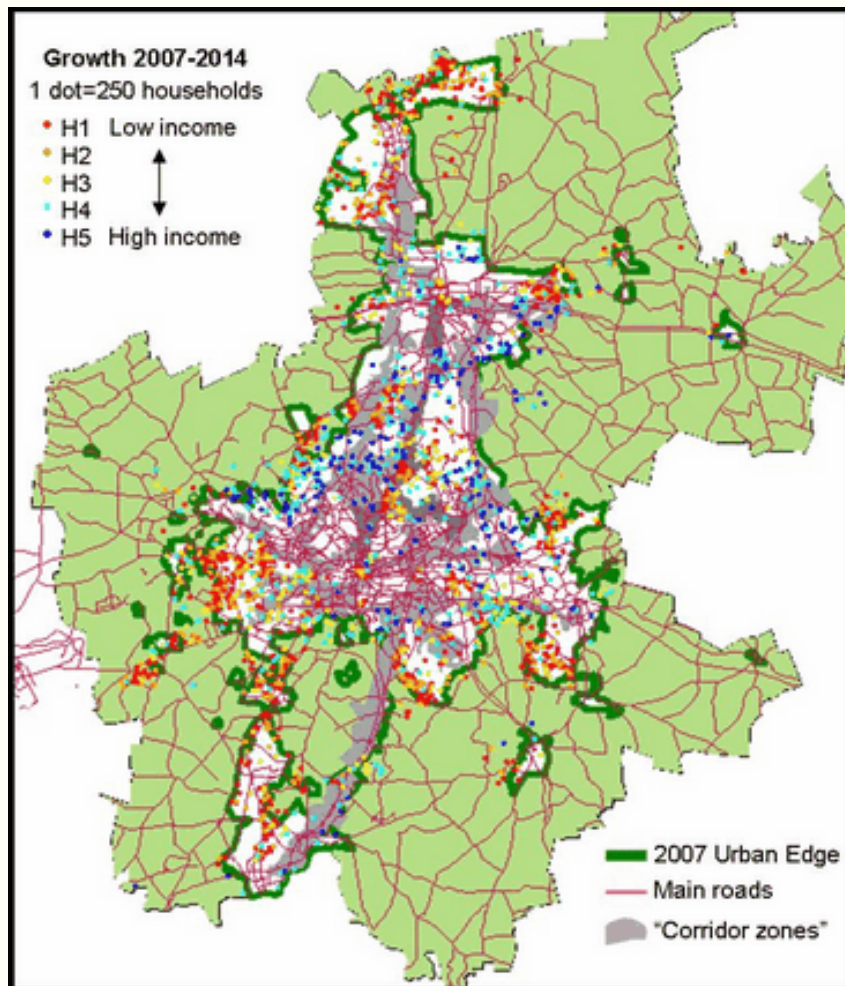
m.knoll@izt.de



- Independent, non-profit research institute, founded in 1981
- Research and consulting on technology foresight and sustainability

Schopenhauerstr. 26 / 14129 Berlin / Germany  
☎ +49-30-803088 88  
**www.izt.de**

# Motivation



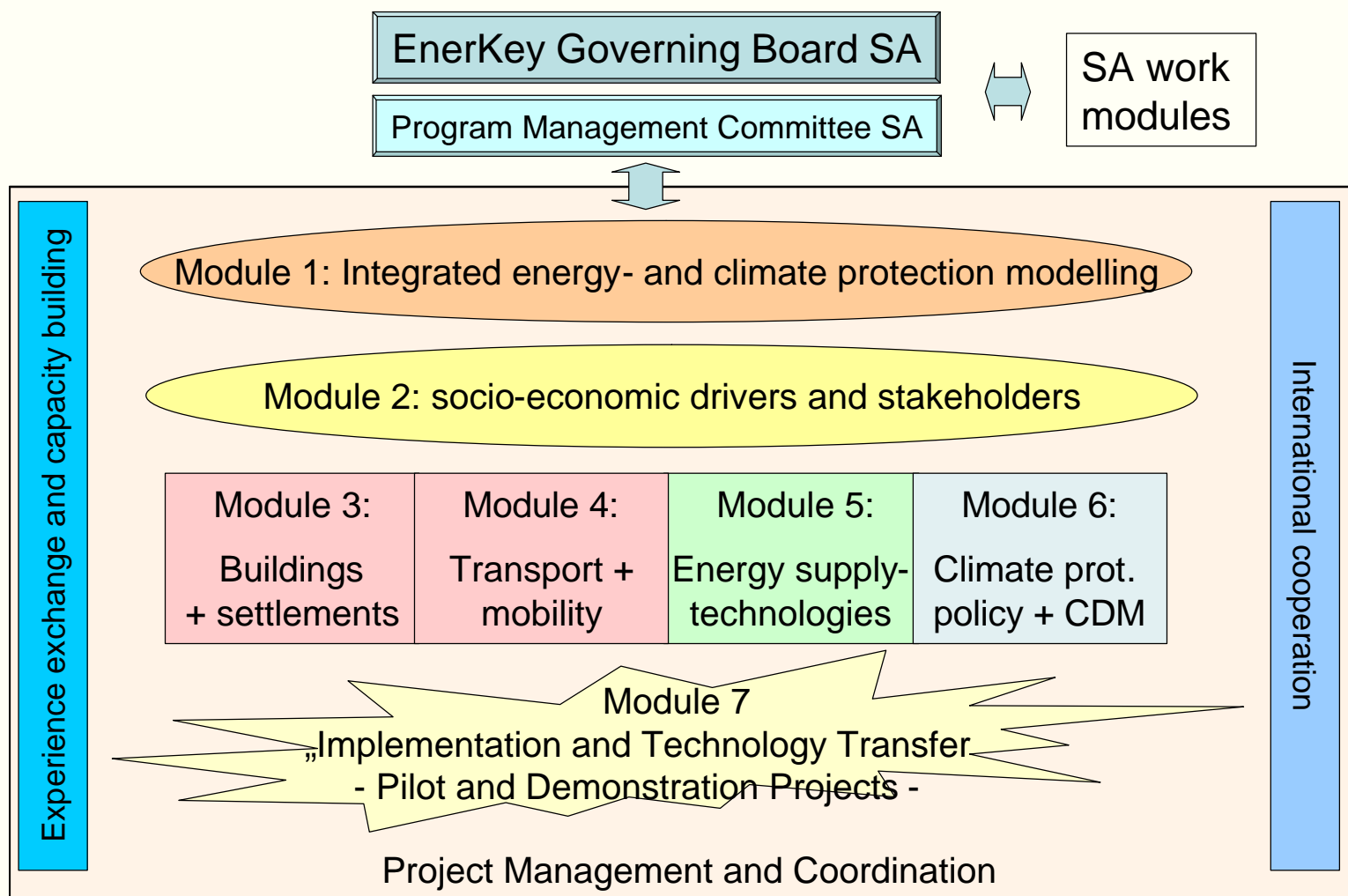
Source: CSIR, Toolkit for Integrated Planning

**How *could*  
Gauteng look like in 2030?**

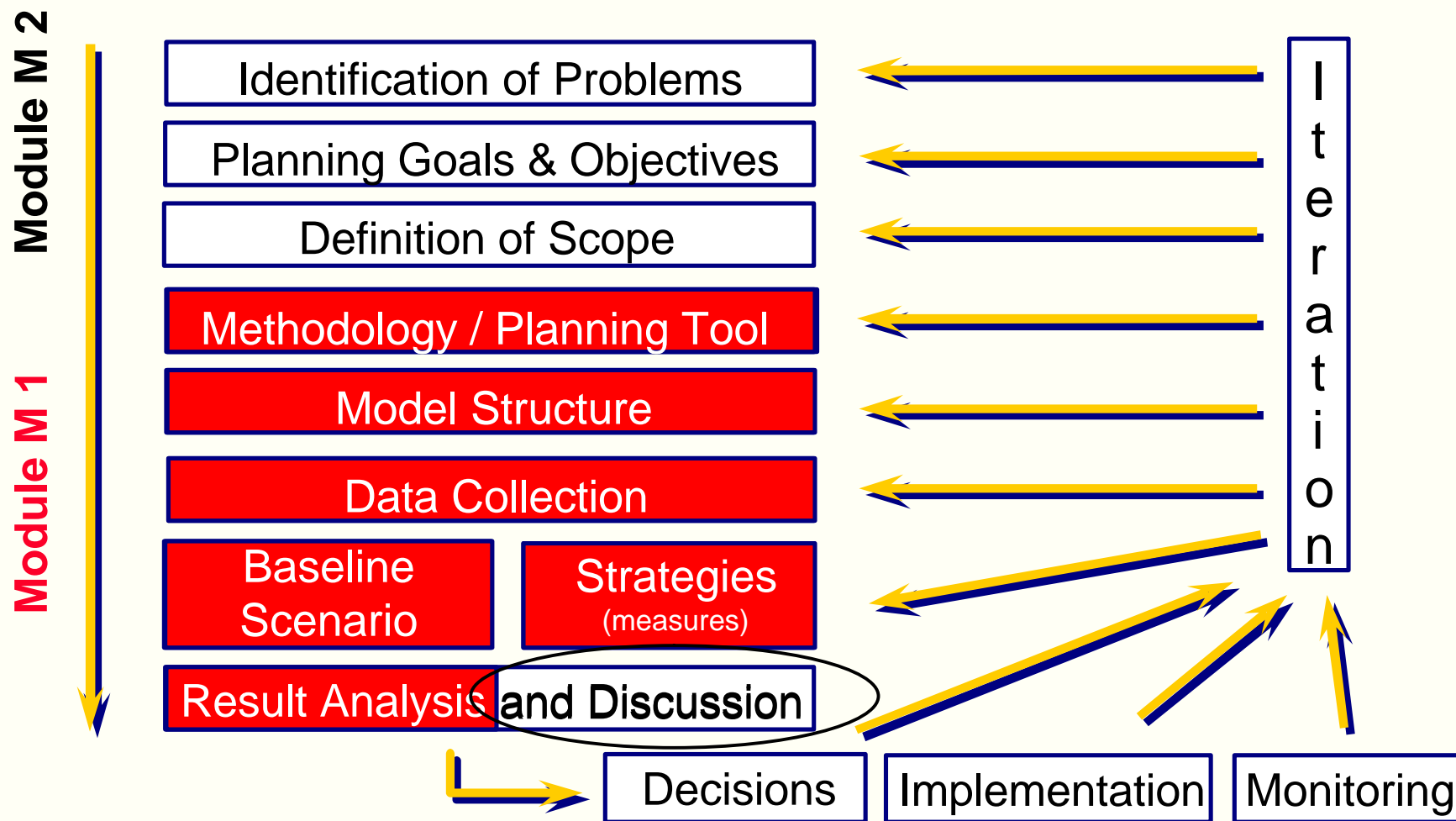
**How *should*  
Gauteng look like in 2030?**

**What does this mean  
for today's energy planning?**

# EnerKey – Research Structure



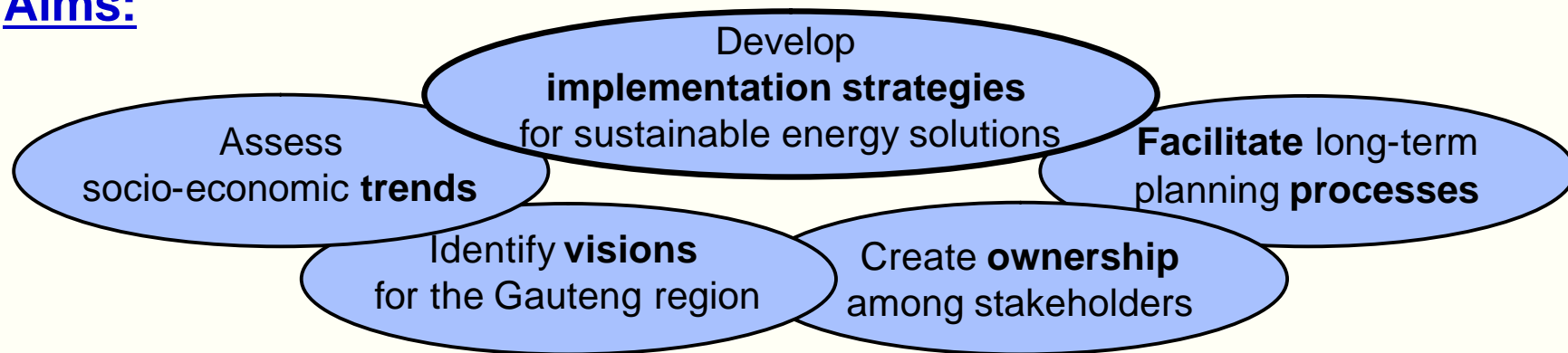
## Phases of Structured Energy Planning



## Module 2: Stakeholders and socio-economic drivers

Today's decisions  
-  
in line with Gauteng's social and energy needs in 2030

### Aims:



## Work Packages - Module 2

(First 18 month)

- **WP 1 - Stakeholder and Policy Analysis**  
Who is doing what and why?
- **WP 2 - Identification of Goals and Visions**  
What should Gauteng look like in 2030?  
(Existing Visions for the region, cities, sectors)
- **WP 3 – Analysis of socio-economic drivers**  
What do we know about the future –  
and where would we want to take a closer look?
- **WP 4 - Assessment of Pilot Actions**  
Not to reinvent the wheel,  
but make the wheel more efficient.

## Work Packages - Module 2

(After month 18)

- **WP 5 - First Scenarios**  
At a first glance: Gauteng's energy system in 2030  
(Discussion of first scenarios of Module 1)
- **WP 6 - General Implementation Strategies**  
Designing a factory for wheels
- **WP 7 - Socio-Economic Drivers for Specific Scenarios**  
But if the future will be different?  
let's have a closer look!
- **WP 8 - Sectoral Implementation Strategies**  
A business model for wheels on every car
- **WP 9 - Evaluation and Perpetuation of the Process**  
The end of EnerKey –  
is just the beginning of strategic and efficient planning

## Module 2: Stakeholders and socio-economic drivers

### Approach:

Integrated participatory stakeholder process



## Involving key actors – The EnerKey Long-term Prospective Group

**Aim:** Anchoring the process, both to:

- integrate viewpoints of different stakeholders
- feed Enerkey results into ongoing actions and processes

**Members:**

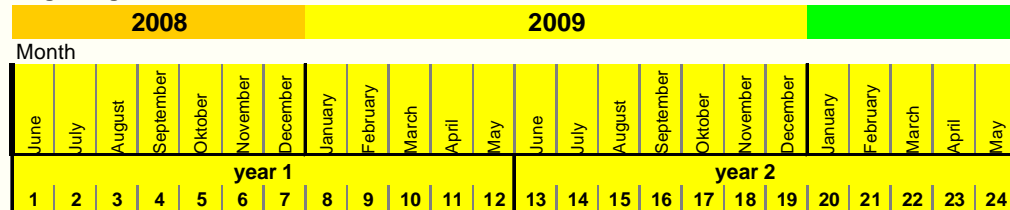
- should have a strategic overview – not specialised experts
- should be part of networks / have possibilities to feed EnerKey results back to their organizations

Chaired by the Gauteng Department of Local Government  
Scientific input and facilitation by IZT

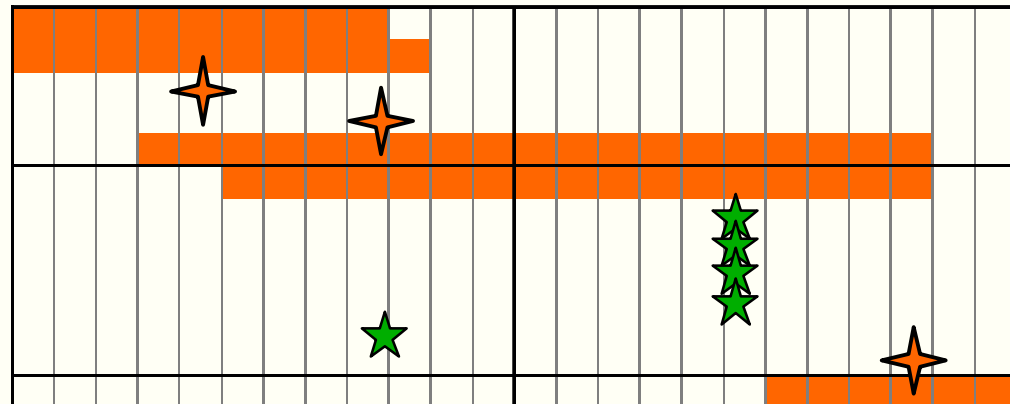
# Timetable Module 2

First 24 months

Beginning June 2008



WP 1	<b>Stakeholder and Policy Analysis</b>
WP 2	<b>Identification of Goals and Visions</b> Kick-off Enerkey Long-term Prospective Group (ELPG) ELPG - Visions 2030
WP 3	<b>Identification of socio-economic drivers</b>
WP 4	<b>Assessment of Pilot Actions</b> Pilot actions in the field of mobility Pilot actions in the field of housing Pilot actions in the field of public buildings Pilot actions in the field of commerce and industry Pilot actions in the field of energy supply ELPG - Mainstreaming of Pilot Actions
WP 5	<b>First Scenarios</b>



Legend:



EnerKey Long-term Perspective Group Session



Sectoral Assessment Workshop

## Conclusion

### Benefits from participating in the ELPG

**Set research focus**

on current and relevant issues

**Immediate feedback of research results**

**Network of experts and decision makers**

**Thank You**



Timon Wehnert

☎ +49-30-803088 13  
in SA: 072 981 9666

t.wehnert@izt.de



Michael Knoll

☎ +49-30-803088 18  
in SA: 072 981 9666

m.knoll@izt.de

Schopenhauerstr. 26 / 14129 Berlin / Germany

☎ +49-30-803088 88

**www.izt.de**