



DEMARICATION OF EKURHULENI

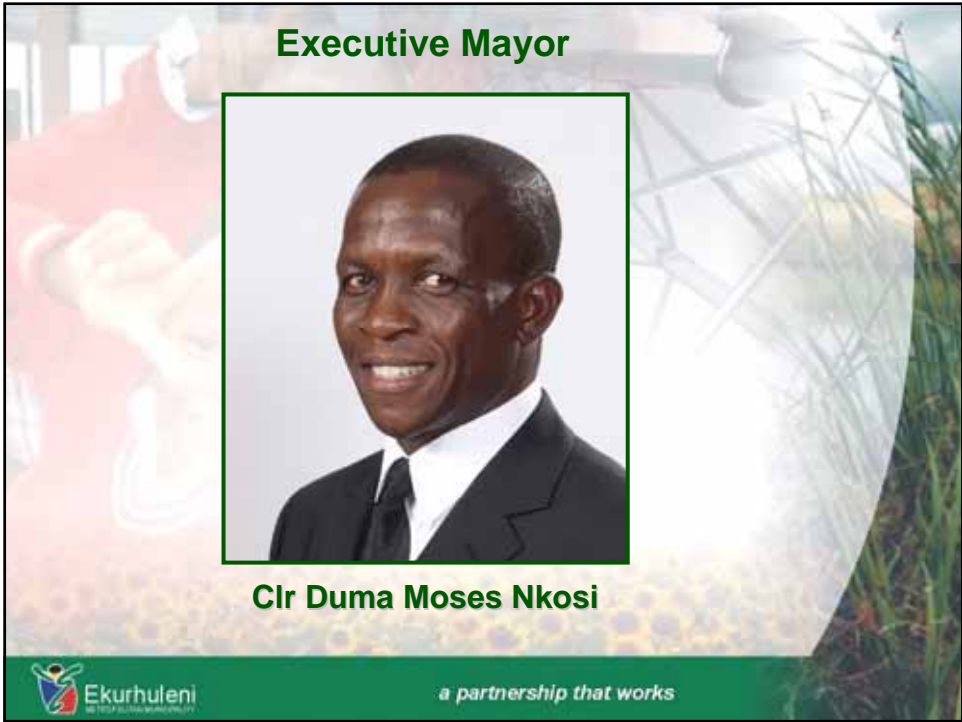
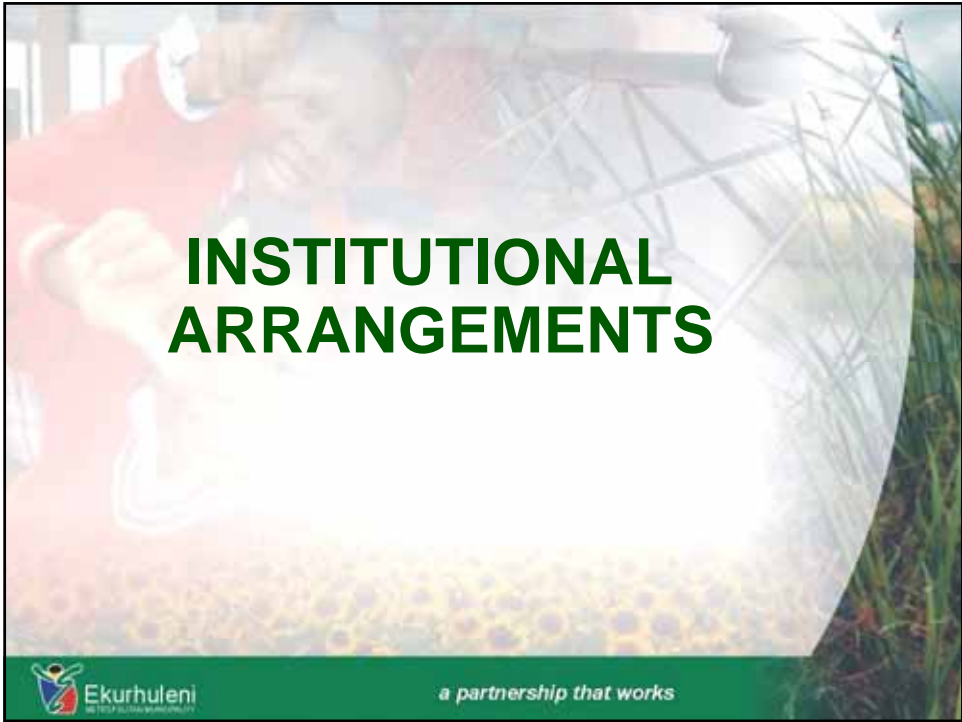
Established – December 2000
One of Three Metros In
Gauteng [6 in SA]

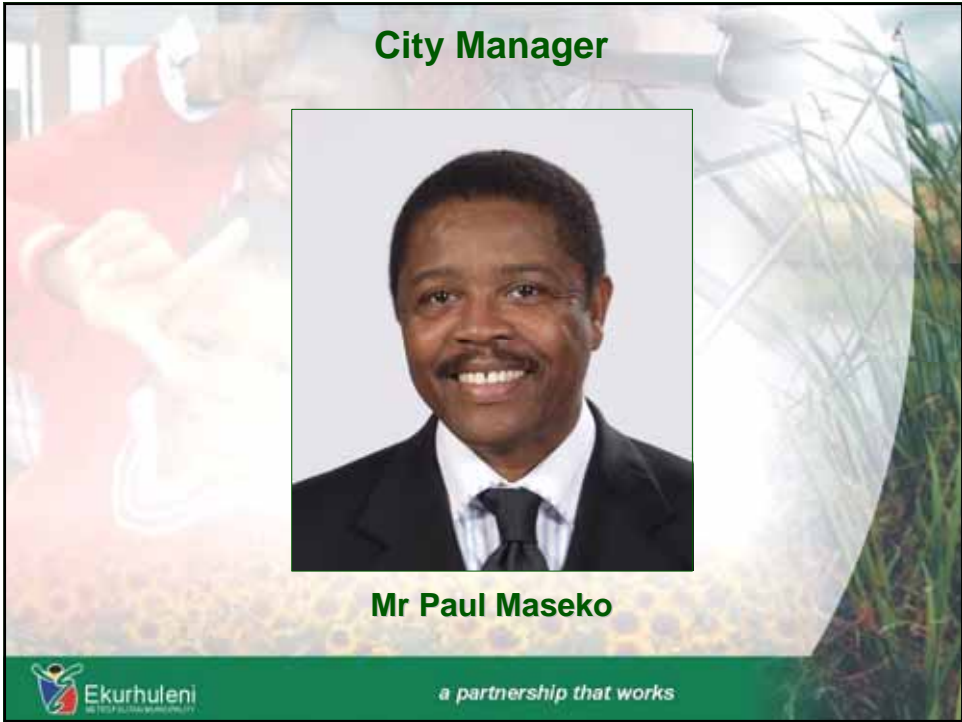
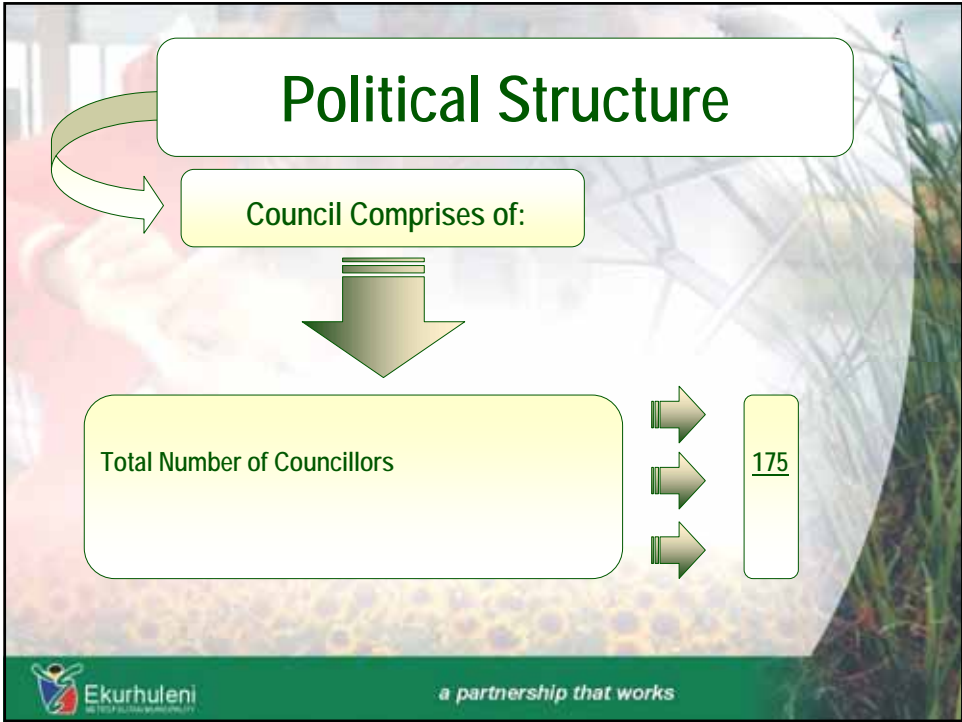
Ekurhuleni
a partnership that works

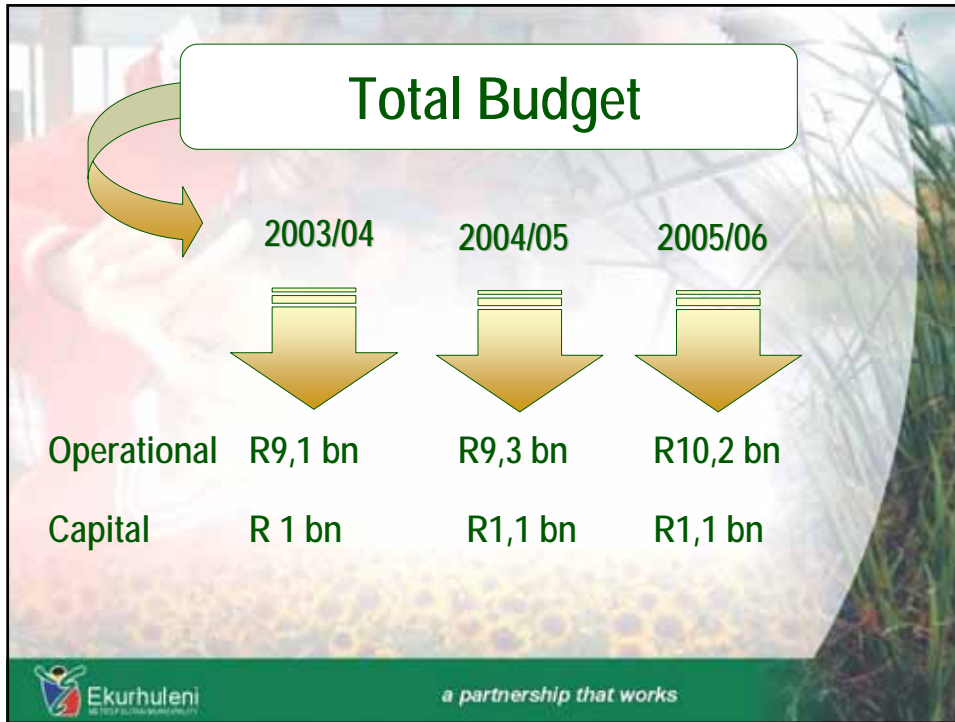
EKURHULENI - KEY STATISTICS

• Municipal Area	1, 900 km ²
• Population	2,5 m
• Number of Households	787 040
• Hostels	21
• Informal Settlements	104
• Lakes, Dams & Pans	+/- 300
• Unemployment Rate	+/- 40%

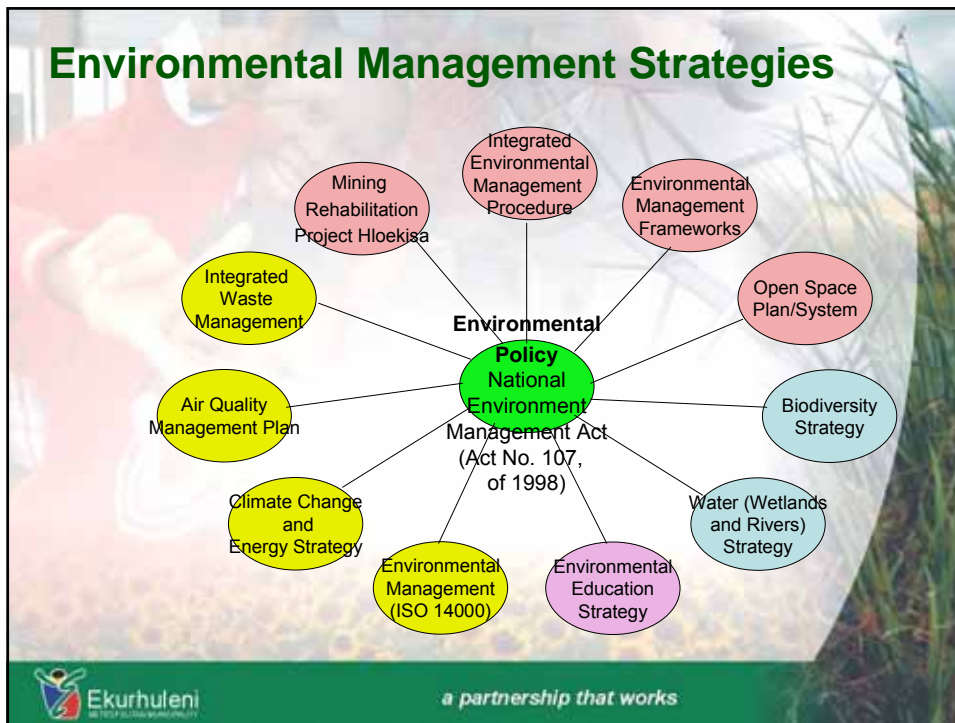
Ekurhuleni
a partnership that works







Environmental Management Strategies



Energy Strategy - Activities

© **Internal Energy Task Team established:**

- ☀ Environment and Tourism – coordinator
- ☀ Municipal infrastructure
- ☀ RTCW
- ☀ Health and Social
- ☀ Development Planning
- ☀ IDP
- ☀ Communications and Marketing
- ☀ LED



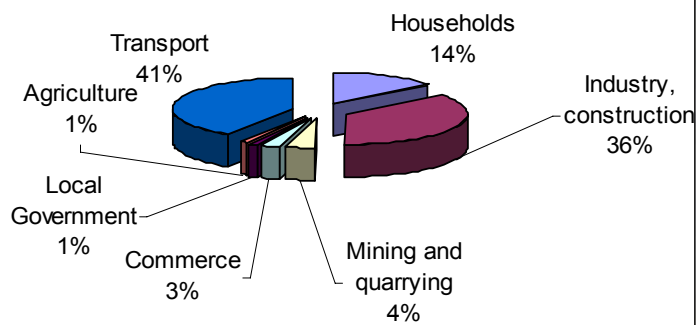
State of Energy Report

- ☉ State of Energy Report finalised and approved by council
 - ⚙ First step in preparation for the development of the Energy Strategy
 - ⚙ Aim of the project: provide status quo report on use of energy in EMM – obtain situational assessment or “baseline information”
- ☉ Key issues highlighted:
 - ⚙ Most energy intensive sector in EMM – transport sector (41%), followed by industry (36%) and households (14%)
 - ⚙ Vehicle transport and households contribute the most to undesirable emissions in EMM
 - ⚙ Illegal electricity connections are a problem
 - ⚙ Few alternatives to fossil fuel burning vehicles are available to EMM's population



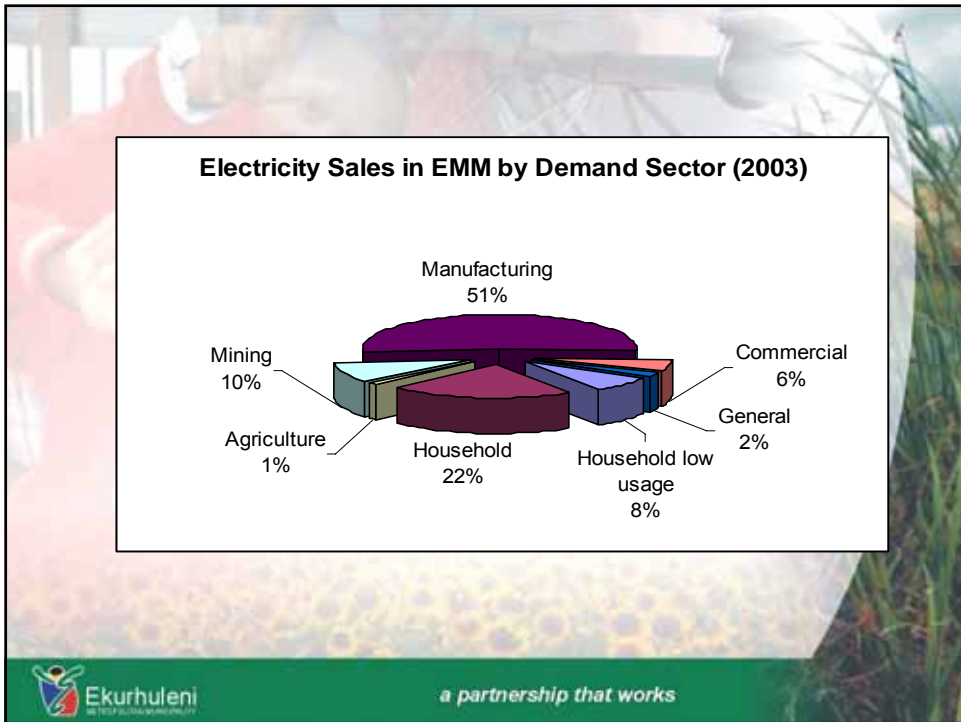
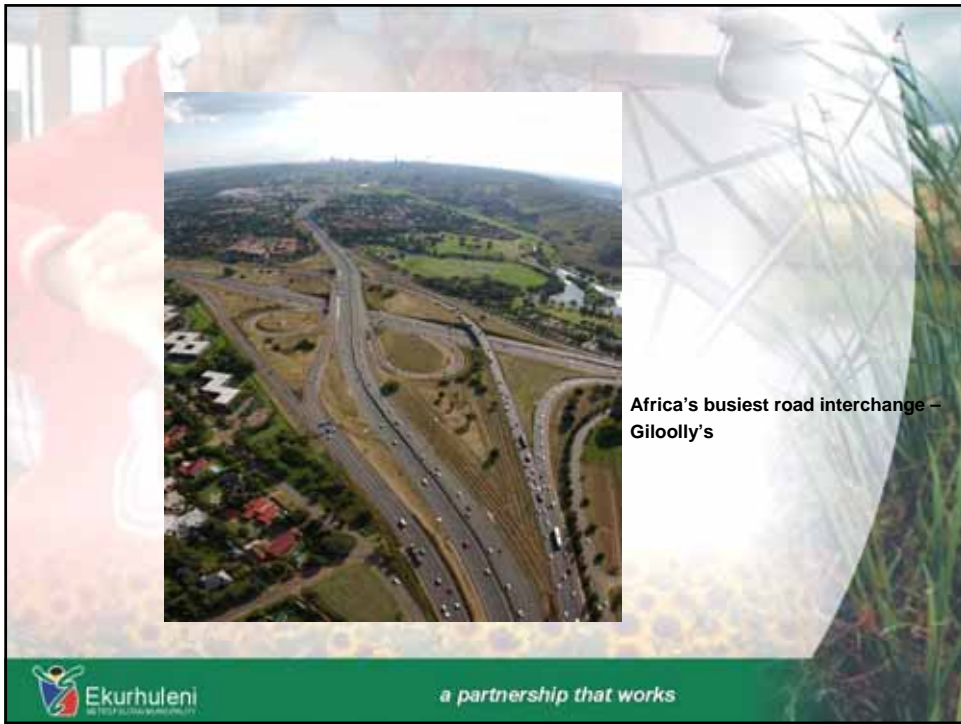
a partnership that works

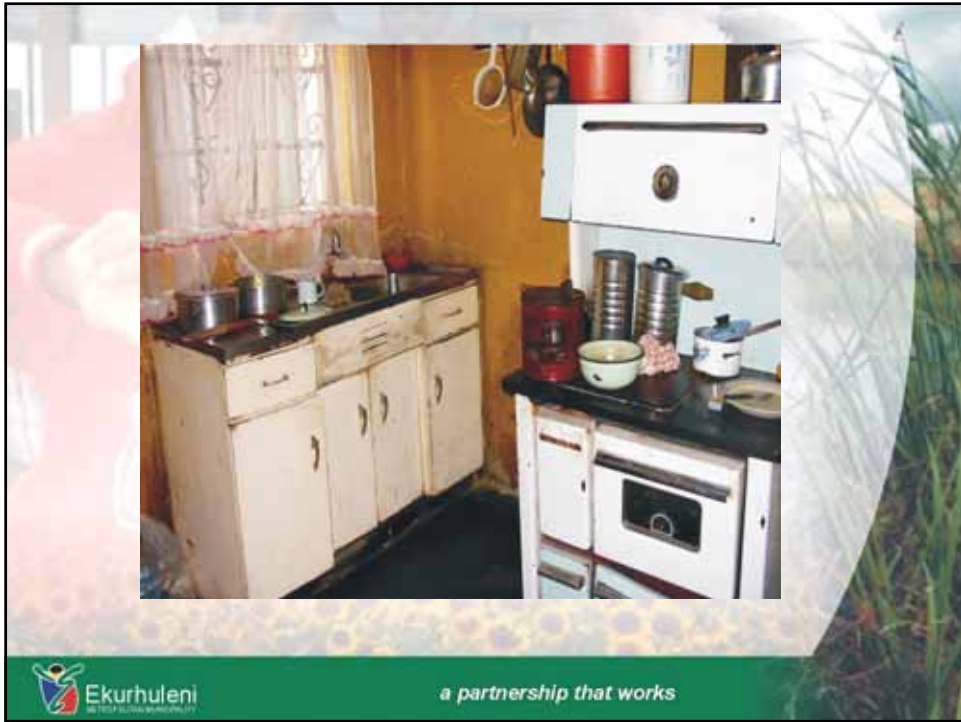
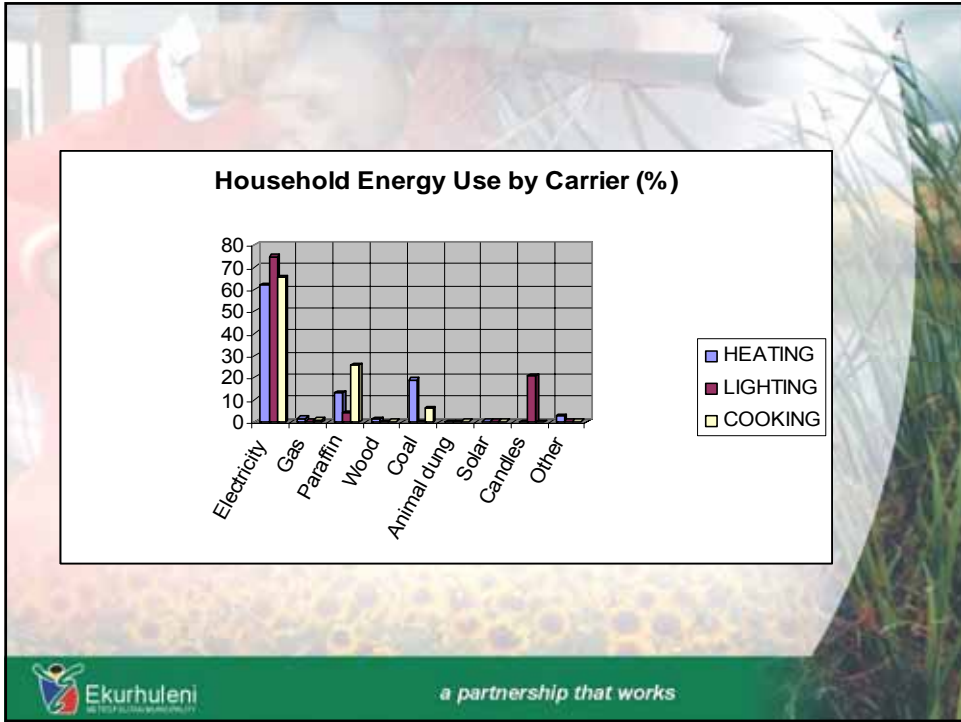
EMM Energy Demand by Sector



a partnership that works

DR1 tradjfajdksjfsadjfksdjfkjds
djfksdajfkjdsfkdsa
Debrah Ramalope; 02.11.2005





Projects

© Audit of Germiston civic centre and EGSC buildings

⊗ Audit objectives –

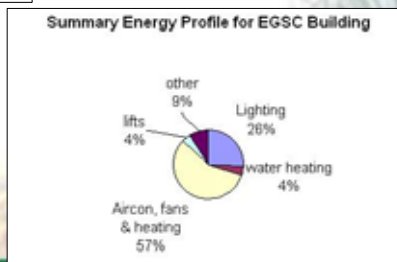
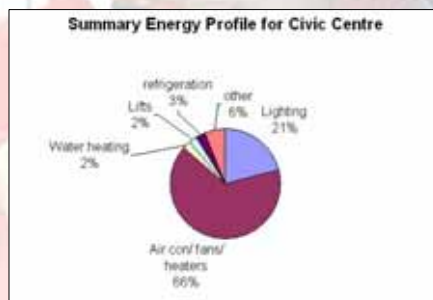
- ⊗ Demonstration
- ⊗ Identify cost-effective resource management measures (energy) in the 2 buildings
- ⊗ provide key guidance for possible retrofitting of the buildings



urhuleni
Ekuhuleni Municipality

a partnership that works

Audit profile:



Ekurhuleni
Ekuhuleni Municipality

a partnership that works

Roll-out to other EMM buildings

- ⊙ 200 + similar buildings in EMM
- ⊙ Training & capacity building NB! – education and awareness section drafting programme
- ⊙ Integrated approach-
 - ⊙ Old buildings – retrofits & new green buildings (draft policy)
 - ⊙ E&TD
 - ⊙ MI-Electricity
 - ⊙ Communication & marketing
 - ⊙ NB to implement projects with partners - SEA, ICLEI, University of Stuttgart



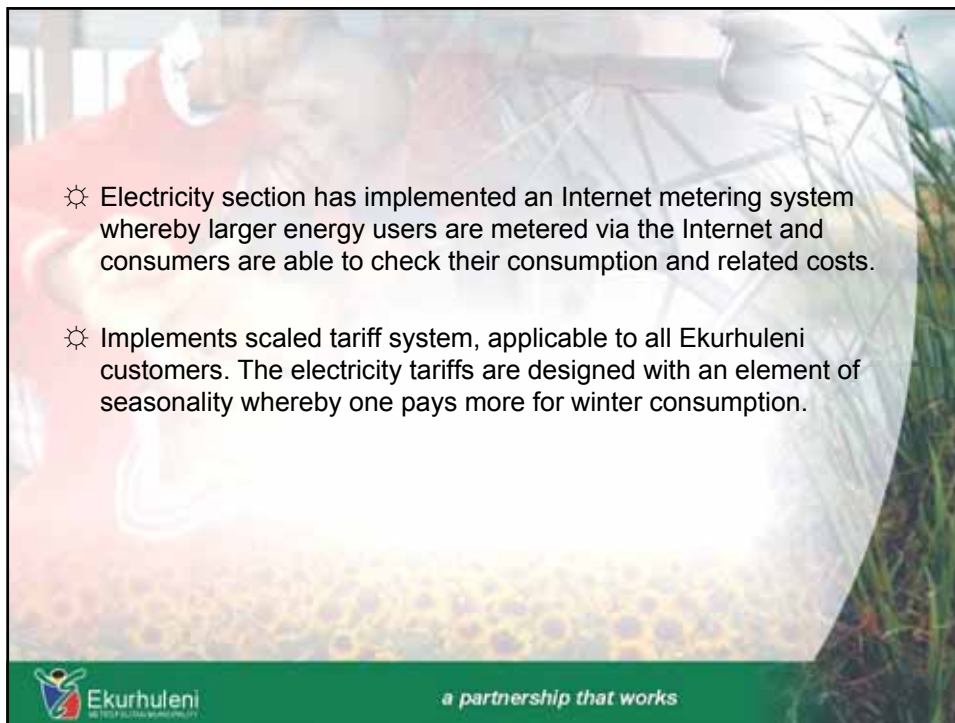
a partnership that works

Projects cont...


- ⊙ ICLEI Funds - \$25 000 for conversion of 20 council owned vehicles to LPG and branding with environmental awareness messages
- ⊙ \$40 000 for retrofitting buildings
- ⊙ RTCW - draft bicycle strategy
- ⊙ Currently compiling ITP – to look at all modes of transport and optimum use of available modes – subcomponent will be environmental issues
- ⊙ Waste – completed feasibility study on 4 landfill sites – methane recovery

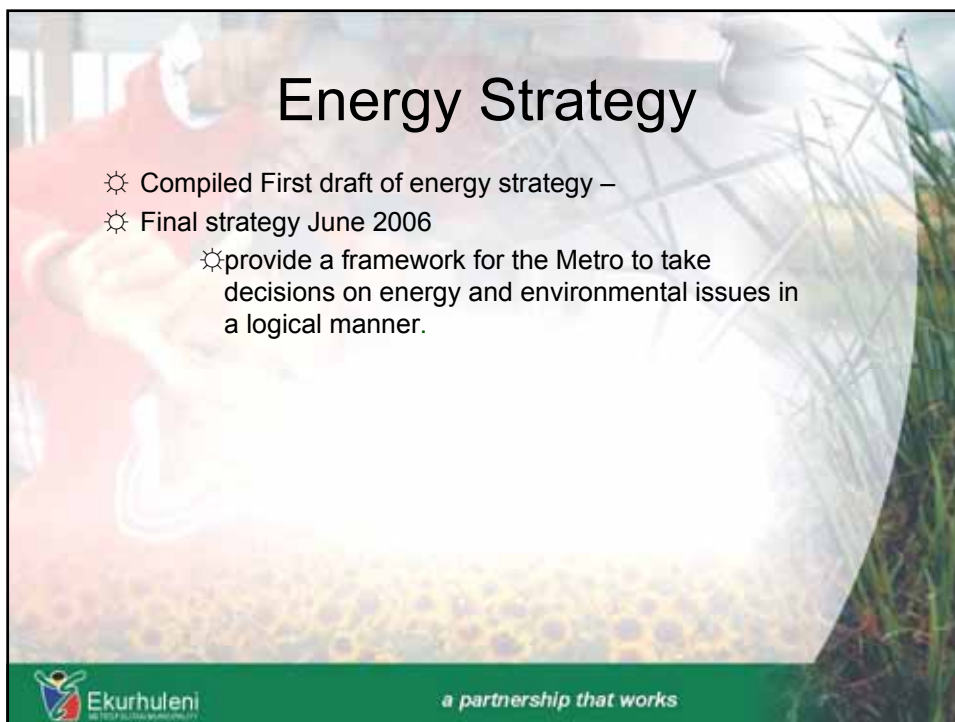


a partnership that works




- ⚙ Electricity section has implemented an Internet metering system whereby larger energy users are metered via the Internet and consumers are able to check their consumption and related costs.
- ⚙ Implements scaled tariff system, applicable to all Ekurhuleni customers. The electricity tariffs are designed with an element of seasonality whereby one pays more for winter consumption.

 Ekurhuleni
a partnership that works



Energy Strategy

- ⚙ Compiled First draft of energy strategy –
- ⚙ Final strategy June 2006
 - ⚙ provide a framework for the Metro to take decisions on energy and environmental issues in a logical manner.

 Ekurhuleni
a partnership that works

Future Plans

- ☀ EnerKey project – part of plans to set up advisory external team and establishing partnership for support and advice,
- ☀ Identify stakeholder group and link up with existing structures



a partnership that works



Thank you



a partnership that works